

CE SGS



RAPTORTECH[®]

CO2 Laser Engraving and Cutting Machine
RTL1390



Feature

- High-grade design for high attention to details.
- 1:4 Wheel speed ratio to keep high quality engraving and cutting.
- Cover for Laser tube easy open design, check tube condition any time.
- External ball screw for lifting, anti-interference to ensure steady performance.
- Rear closed/open design; satisfy dust proof and material feeding in one.
- Digital Offline control system, USB available, RD and Lettro alternative.

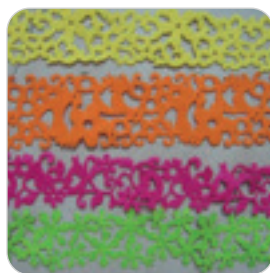
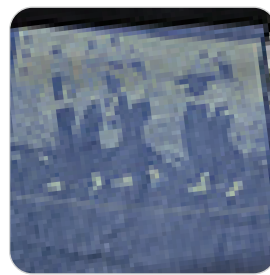
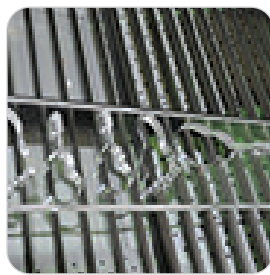
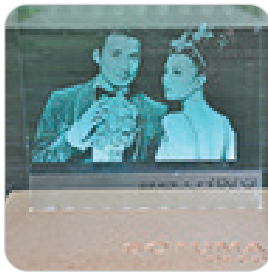
Application

- Advertising industry: acrylic, double-color board engraving and cutting and other materials.
- Leather and garment industry: leather and cloth engraving and carving.
- Craft industry: papercuts, woodwork, bamboo ware, shell and ivory engraving and cutting.
- Model industry: construction models, aviation and navigation models and wooden toys.
- Packaging industry: flexography, plywood and knife module cutting.
- Decoration and Electrical Appliance Industry.

Technical Parameters

Machine Model	RTL1390
Working size	1300*900 mm
Laser Type	DC glass laser tube (CO2)
Wave length	10.6 μm
Engraving speed	0 ~ 1200 mm/s
Cutting speed	0 ~ 600 mm/s
Reposition accuracy	±0.01mm
Cooling system	Water cooling_CHILLER 5200AH
Laser tube	60W-80W-100W-130W-150W
Supported format	PLT,DST,DXF,DWG,AI,LAS Support, AutoCAD, Corel Draw output directly
Driver	Stepper motor
Control system	Digital offline control system
Minimum letter size	Chinese: 1.5mm, English: 1mm
Working voltage	AC200V_110V(+10%) /50 HZ /60HZ
Motorized Up& Down Working Table (Optional)	Ball Screw Transmission, Max Lifting 260mm
Machine power	≤ 1500 W
Working environment	Temperature: 0 °C ~ 45 °C, humidity: 5% ~ 95%
Control system	Digital Offline control system
Add-ons	Auto Focus, Honeycomb table, Rotary device, Fume extractor

Machine working samples



SOTUMA DECO

ADD: 111 Av. Mustapha Mohsen Borj Louzir 2083 Ariana_TUNISIA

TEL: +216 70 69 48 88

FAX: +216 70 69 48 55

WEB: www.sotuma.tn

E-MAIL: contact@sotuma.tn

Machine image for reference only, subject to real product.

